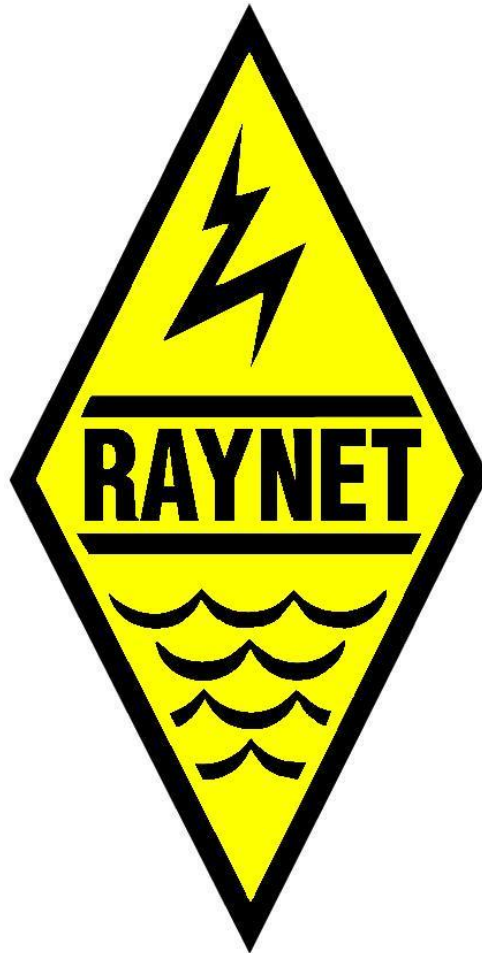




# **Essex Raynet Callout plan for Coastal Flooding**





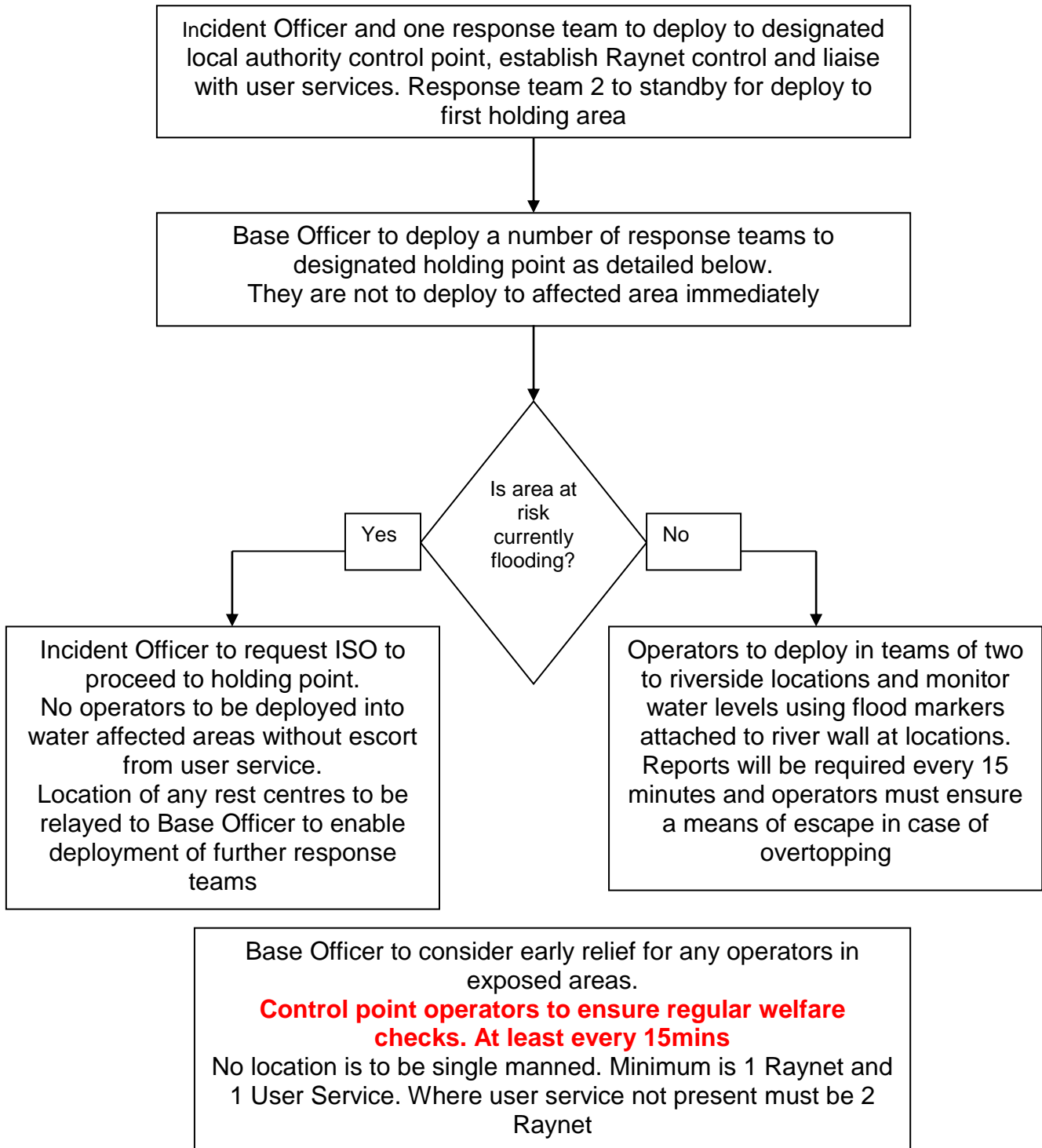
## **Contents**

Coastal flooding callout plan	3
Predefined flood situation holding points	4
General callout plan	5
Health & Safety	6



## Essex Raynet callout plan for coastal flooding

In the event that the duty controller receives a call for a floodwatch or confirmed flooding incident the following plan will be implemented. The Essex Raynet call out plan first should be followed. (see Page 3)





## **Essex Raynet callout plan for coastal flooding**

### **Predefined flood situation holding points**

Harwich Area – A120 Horsley Cross Roundabout (TM 1239 2740)

Clacton/Walton – McDonalds, A133 Weeley Bypass (TM1375 2240)

Colchester – Mcdonalds, Tollgate, Off A1124/A12 junction (TL9520 2445)

Maldon – Ernest Doe & Son, Ulting (TL8158 1027)

or

Oak Corner Roundabout A414 (TL8072 0472)

Dengie (Burnham/Bradwell etc) – Latchingdon Church, (TL8859 0055)

South Woodham Ferrers – Rettendon Turnpike (A130/A132) (TQ7737 9536)

Rochford/Southend – Mcdonalds, Airport Retail Park, Southend (TQ8748 8888)

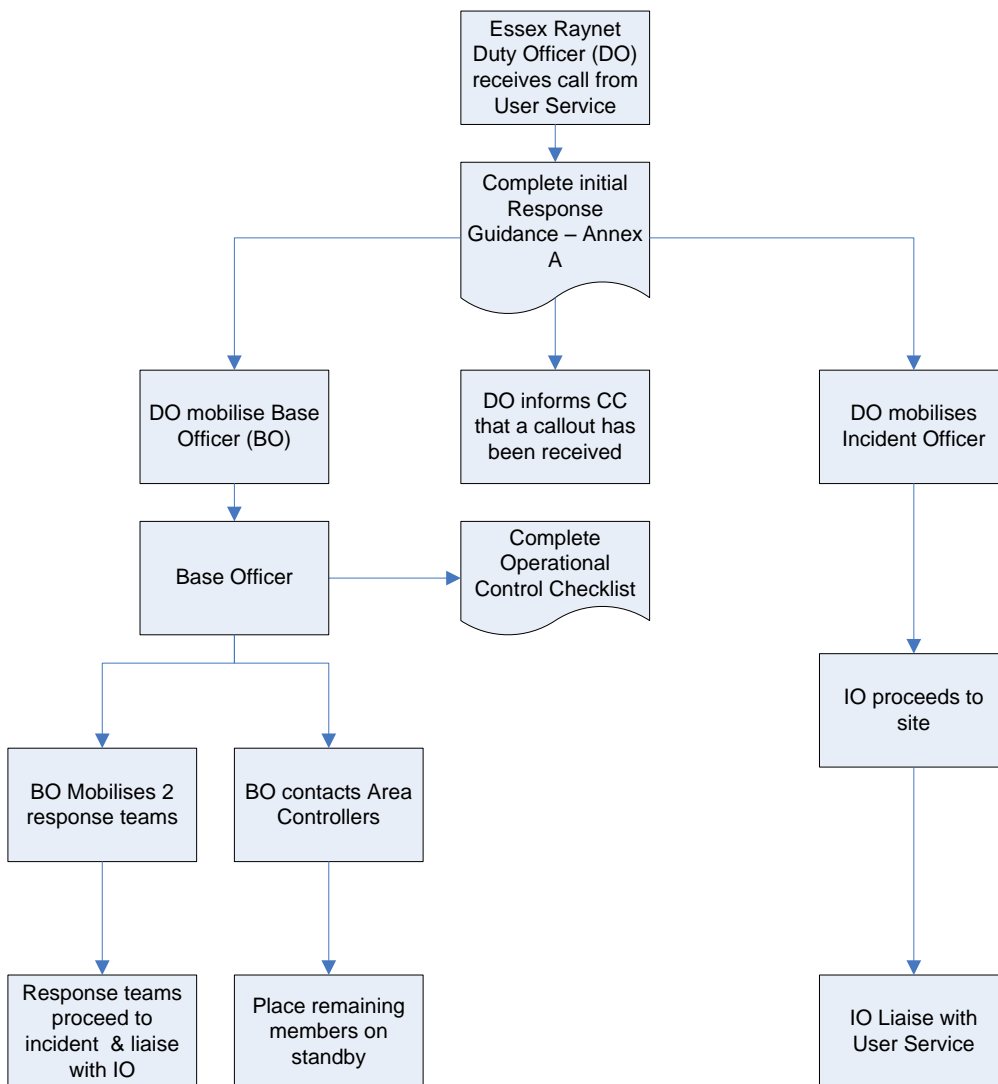
Canvey Island – Sadlers Farm Roundabout (A130/A13) (TQ7630 0852)

Thurrock – Treacle Mine Roundabout (A13/A1306) (TQ6093 7987)



## Essex Raynet Callout Plan and Process

The generic Essex Raynet callout process is shown below. This process must be followed for all incidents requiring Essex Raynet attendance.





## **Essex Raynet Flood Plan Health & Safety**

All Raynet operators are to follow the Raynet Health and safety policy

All Raynet operators must be clearly identifiable as Raynet staff at all times.

Raynet members called out to a flooding incident should bear in mind they may well encounter adverse weather conditions and should be accordingly prepared.

No Raynet members are to re-locate them selves unless

1. Personal safety is in immediate danger
2. Instructed to do so by a police officer
- 3.

If relocation is necessary control must be informed as soon as it is safe to do so.